

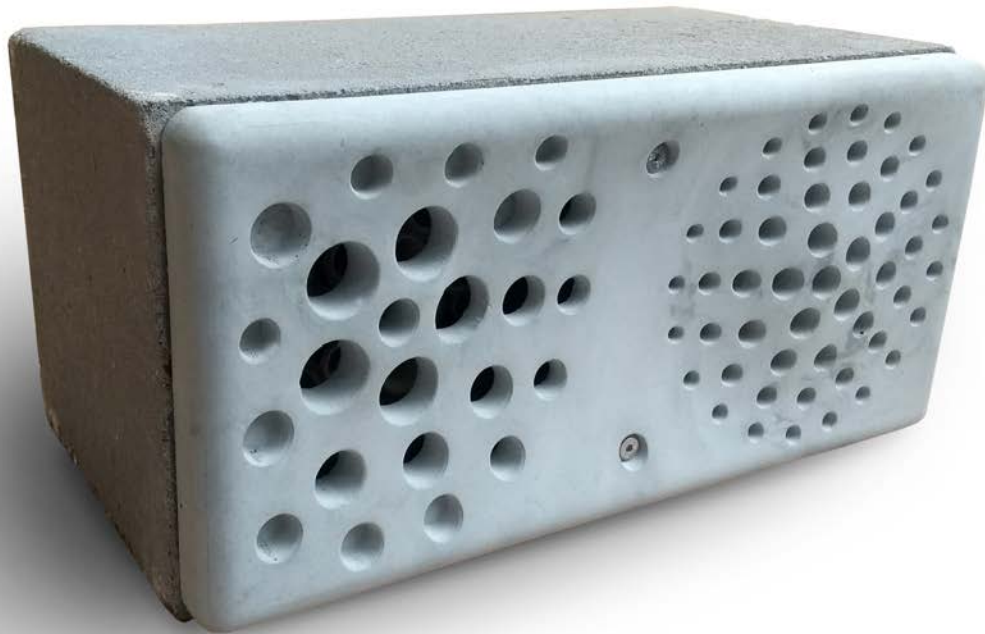
---

beginn



BEE HOTEL

---

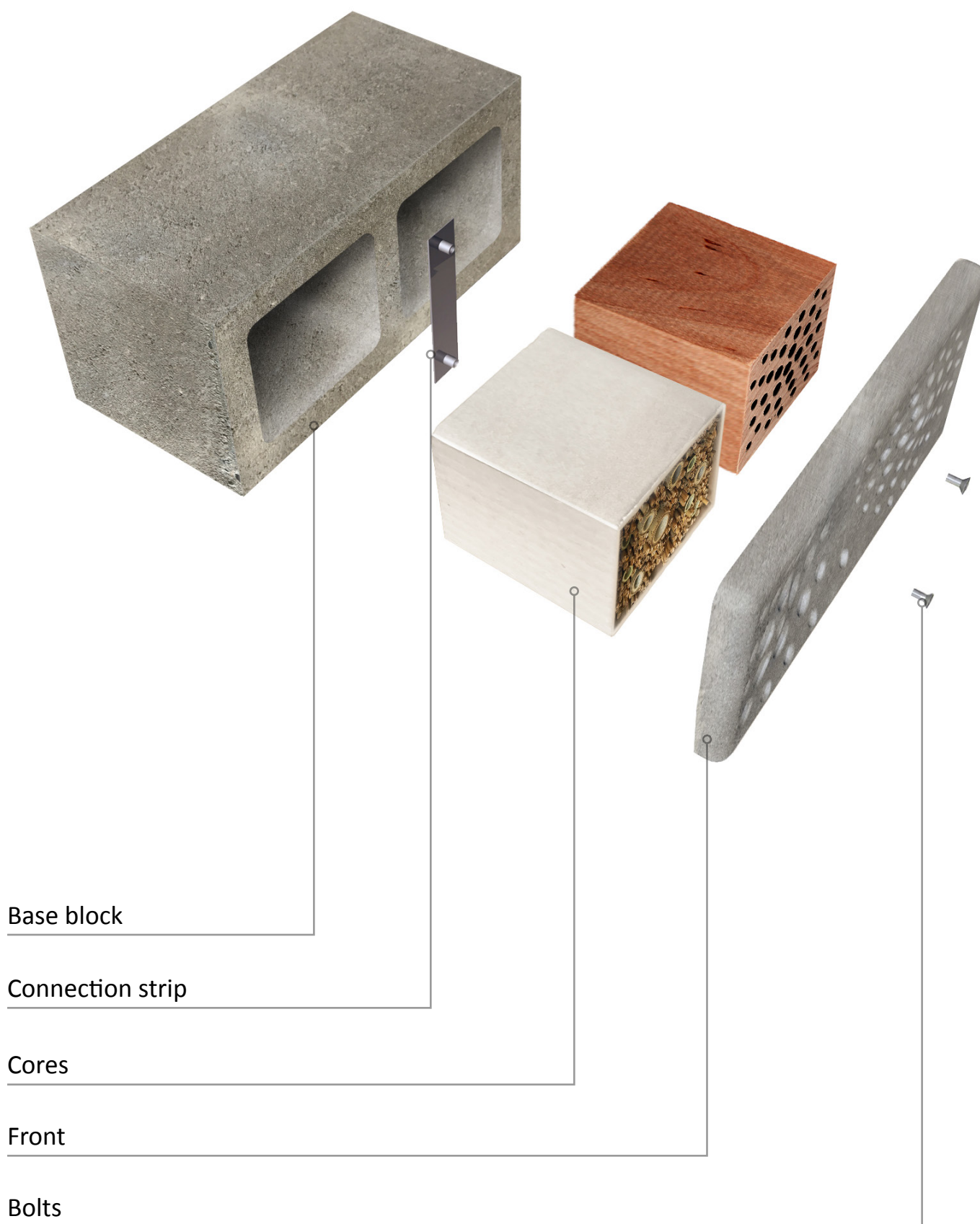


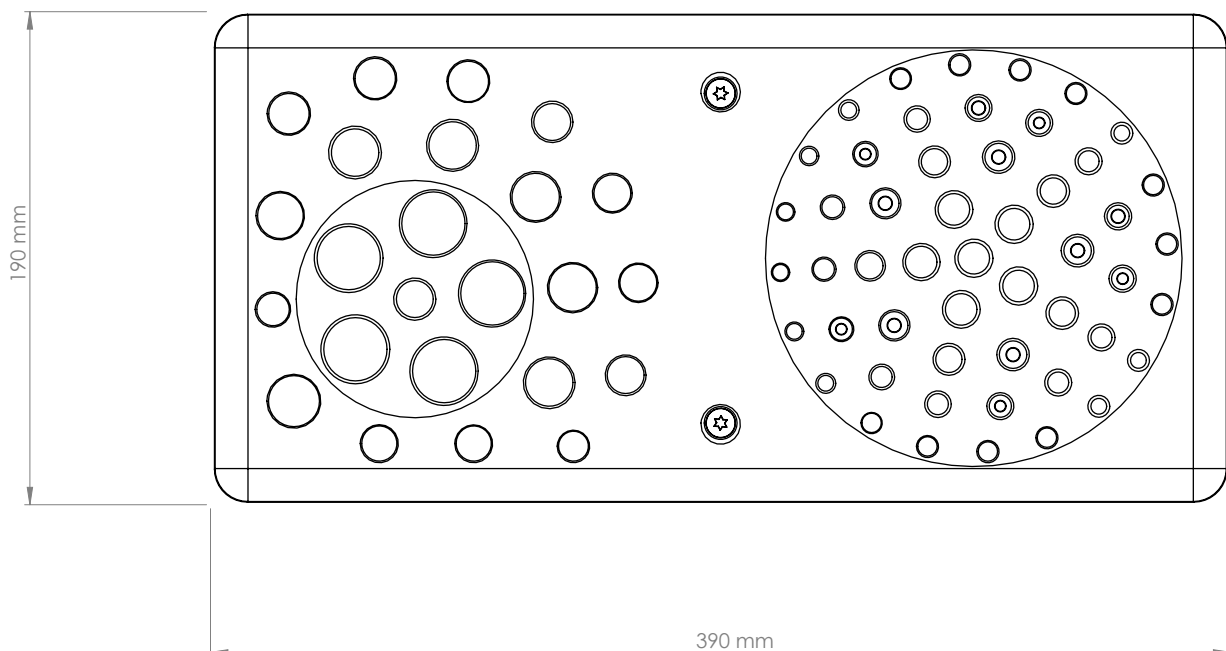
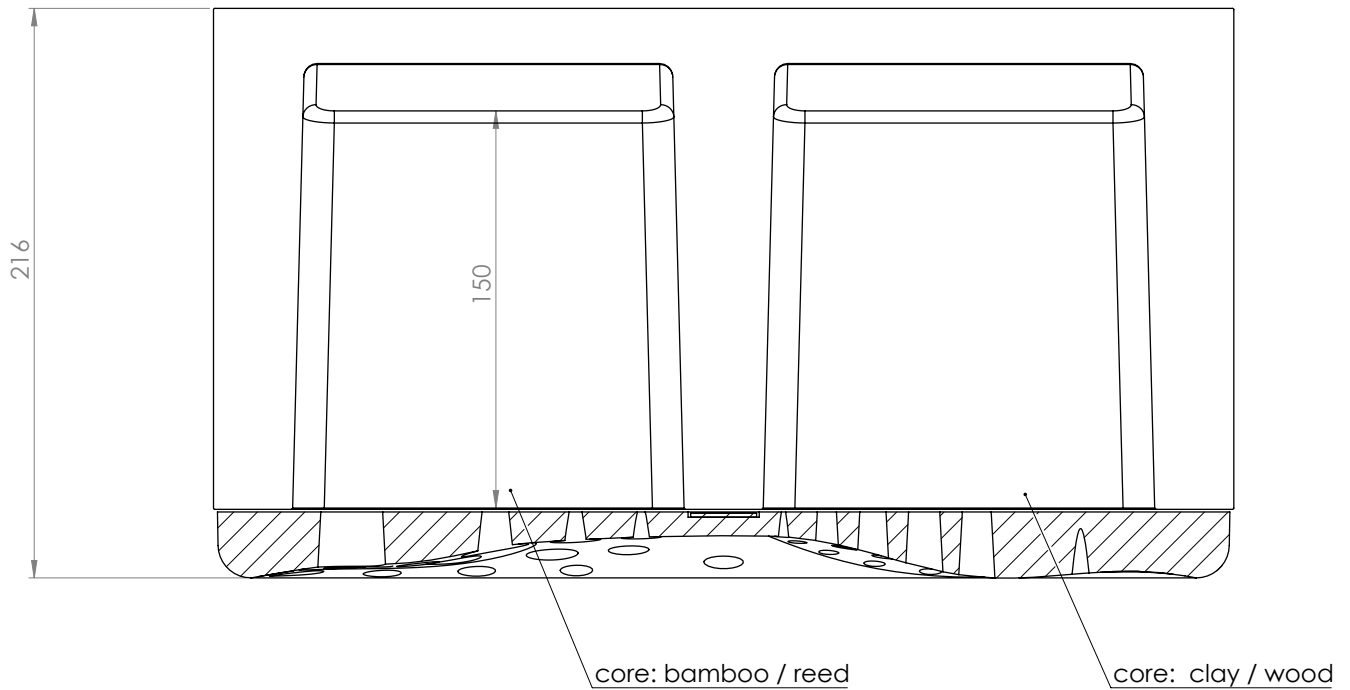
Design-for-nature startup Buginn presents a beautiful construction element that provides shelter for wild bees. We call it The Bee Hotel.

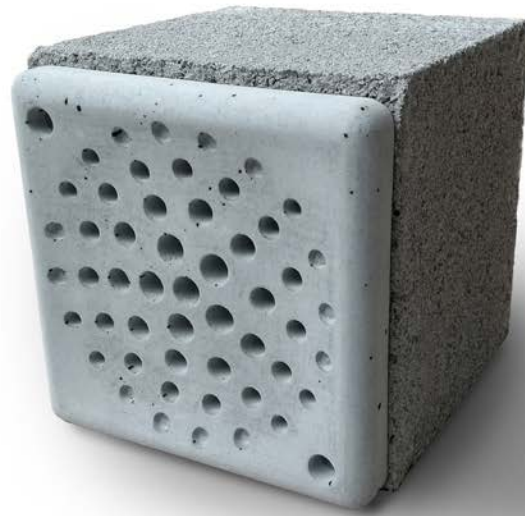
The basic idea behind the product is twofold; Provide a safe nesting place for solitary bees and other pollinators that can be implemented on a large scale in public space projects. Secondly make the concrete jungle around us more natural and refined. Many years of research and development resulted in a product that is both beautiful and functional.

The bee hotel consists of a modular concrete base, two cores of bee-friendly material and a concrete cover that protects the bees inside against predators and human vandals. You can use these modular bee hotels by creating a (retaining) wall, immerse in buildings or place single hotels in public parks and gardens. Always combine with suitable plants for food.

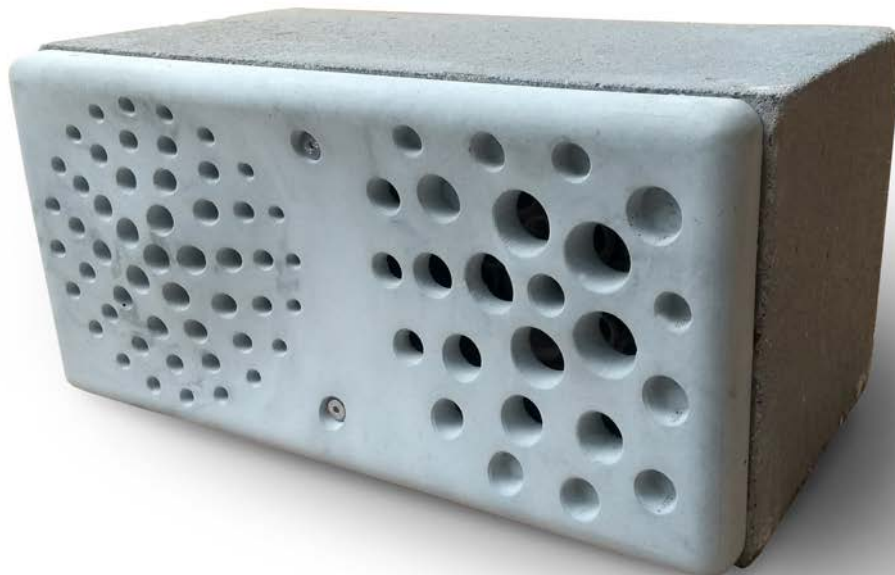
Buginn is a collaboration project by ecological gardener Babako and Dutch design agency Studio Überdutch. Would you like to get involved and help us give pollinators the support they desperately need? Get in touch, we'd love to collaborate with you. Let's create a buzz.







*Single - 37 small holes*



*Double - 40 small holes, 15 large holes*

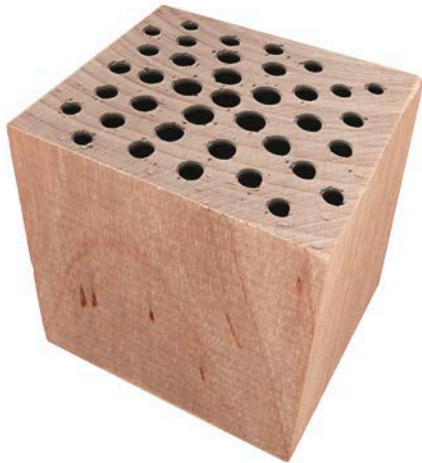




*Reed / bamboo*



*Clay*



*Wood*

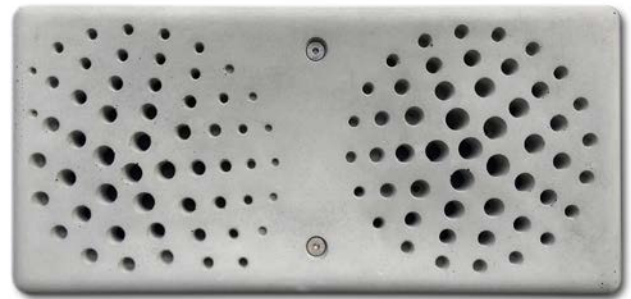
Every type of wild bee has its own preferred nesting material and nesting behavior. Buginn provides many options for core material, such as wood, clay and reed.

A standard double model consists of 1 clay core and 1 reed /bamboo core.

After a couple of years bee hotels become less functional. Rainwater, mite and fungi take a toll on the nest. That's why our cores can easily be replaced with new ones, making Buginn a highly durable and easy to manage solution for public green projects.



Large + small entrance



Small entrance



Wild bees come in all shapes and sizes, so the diameter of the entrance to their nest varies.

Buginn provides different front options: either a mix of small holes that vary between 3 to 12 mm, or a combination of small and large holes. The large holes are used for reed/bamboo cores.

We also offer special cover designs / colors upon request to make your Bee Hotels blend in or stand out!

## General data:

	<i>Double</i>	<i>Single</i>
Weight:	<i>25 kg</i>	<i>15 kg</i>
Length:	<i>390 mm</i>	<i>190 mm</i>
Width:	<i>216 mm</i>	<i>190 mm</i>
Height:	<i>190 mm</i>	<i>190 mm</i>
Colour:	<i>gray (standard)</i>	
Diameters: small:	<i>3 to 12 mm</i>	
big:	<i>14 to 24 mm</i>	

## Quality front:

Environmental class:	<i>X0 (no reinforcement)</i>
Additives:	<i>-</i>

## Core material:

Bamboo:	<i>Local grown bamboo in a range of diameters,</i>
Reed:	<i>In a range of diameters, of EU origin.</i>
Loam:	<i>From EU soil.</i>
Wood:	<i>Local wood pre-drilled in a range of diameters.</i>

## Quality base block:

Compressive strength - characteristic:	<i>6,0 N/mm<sup>2</sup></i>
Compressive strength - normalized:	<i>8 N/mm<sup>2</sup></i>
Sensitivity to moisture:	<i>≤ 0.45 mm/m</i>
Dry weight by volume concrete:	<i>2000 kg/m<sup>3</sup></i>
Dry weight by volume stone:	<i>1400 kg/m<sup>3</sup></i>
Shear strength:	<i>0,15 N/mm<sup>2</sup></i>
Fire class:	<i>A1</i>
Water absorption:	<i>≤ 8 g/m<sup>2</sup>s</i>
Quality class:	<i>8/1.4</i>
Type of brickwork:	<i>A2 - B2 - C - D</i>





## Buginn Bee Hotel - double

<i>1-11 pcs</i>	<i>12-35 pcs</i>	<i>36-120 pcs</i>	<i>120 -&gt;</i>
€ 65,- ppu	€ 60,- ppu	€ 57,- ppu	€ 49,- ppu



## Buginn Bee Hotel - single

<i>1-11 pcs</i>	<i>12-35 pcs</i>	<i>36-120 pcs</i>	<i>120 -&gt;</i>
€ 40,- ppu	€ 37,- ppu	€ 35,- ppu	€ 30,- ppu



## Buginn Bee Hotel - cores clay / bamboo + reed

<i>1-11 pcs</i>	<i>12-35 pcs</i>	<i>36-120 pcs</i>	<i>120 -&gt;</i>
€ 14,- ppu	€ 12,- ppu	€ 10,50 ppu	€ 9,50 ppu



## Buginn Bee Hotel - custom

Custom designs such as different colors, patterns or logos:  
please contact us for options and prices

All prices are ex VAT and transport

Price changes and errors reserved - for general conditions, go to [www.buginn.nl](http://www.buginn.nl)



Utrecht, NL



Nijeberkoop, NL



Appeltern, NL



## Buginn

Lulofsstraat 55  
2521 AL The Hague  
The Netherlands

+31 (0)70 890 9516  
[info@buginn.nl](mailto:info@buginn.nl)  
[www.buginn.nl](http://www.buginn.nl)